

COVID-19 and Preventive Care: Work in Progress

Dr Scott Laing MD, CFPC PGY3 Clinician Scholar
 Dr Sharon Johnston MD, LLD, CFPC

Background

- COVID-19 has challenged the delivery of primary care.
- Many preventive care services have been placed on hold.
- While studies have quantified Ontario's surgery backlog, there are no efforts to **quantify the growing deficit of primary care preventive services²**.

Methodology

- Patient data exported from 3 Ottawa area clinics' EMR every week.
- Preventive care data analysed to determine the percentage that have been appropriately screened following Canadian guidelines³.
- Analysis was completed in Python.

Demographics		
Type of Screening	Eligibility	N
Total Patients	All Patients	22 488
Providers	All	29
Cervical Cancer Screening	Low Risk	7145
	Excluded	537
Colon Cancer Screening	Low Risk	7104
	Excluded	240
Diabetes Screening	Low Risk	12 452
	Excluded	11 132

Results

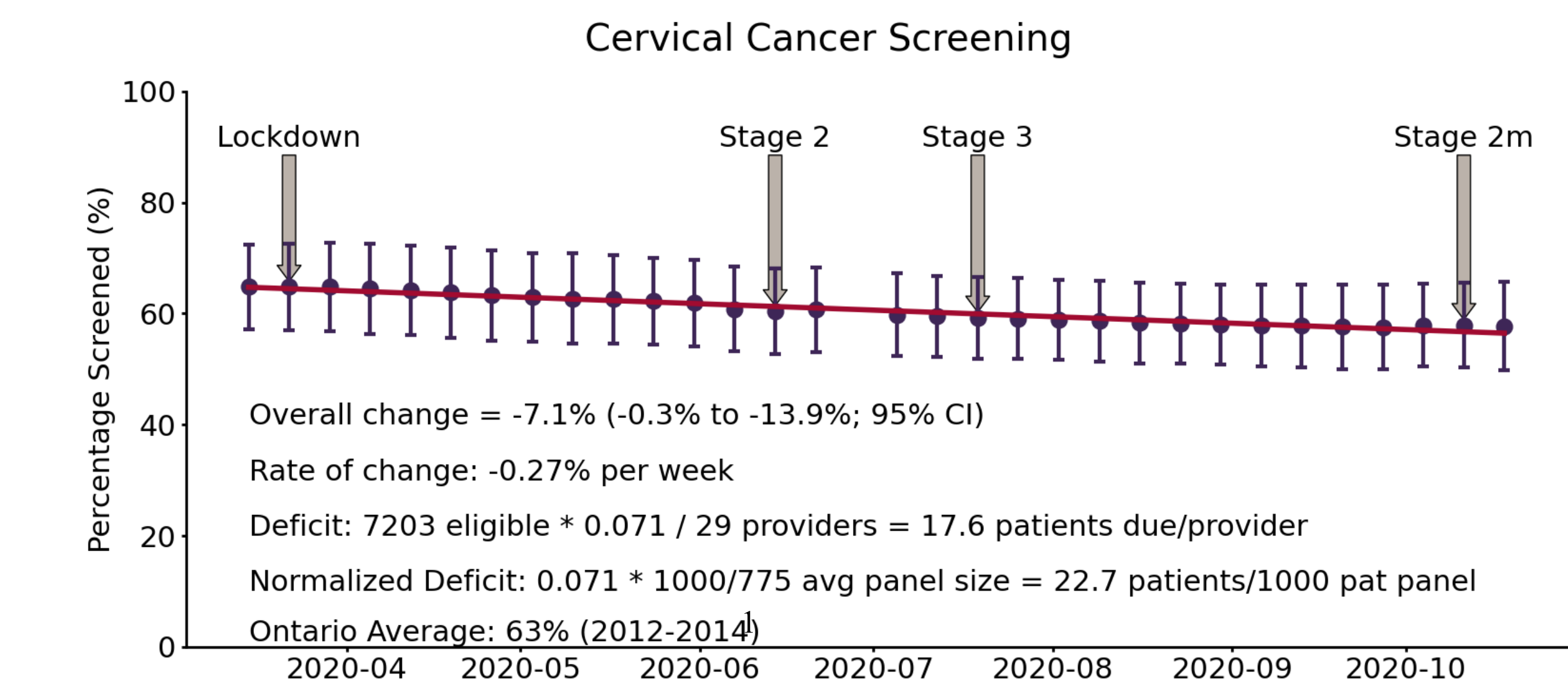


Figure 1. Cervical cancer screening showing the percentage of eligible patients with a pap test completed in the last 3 years. Shows the mean percentage screened per provider +/- SD.

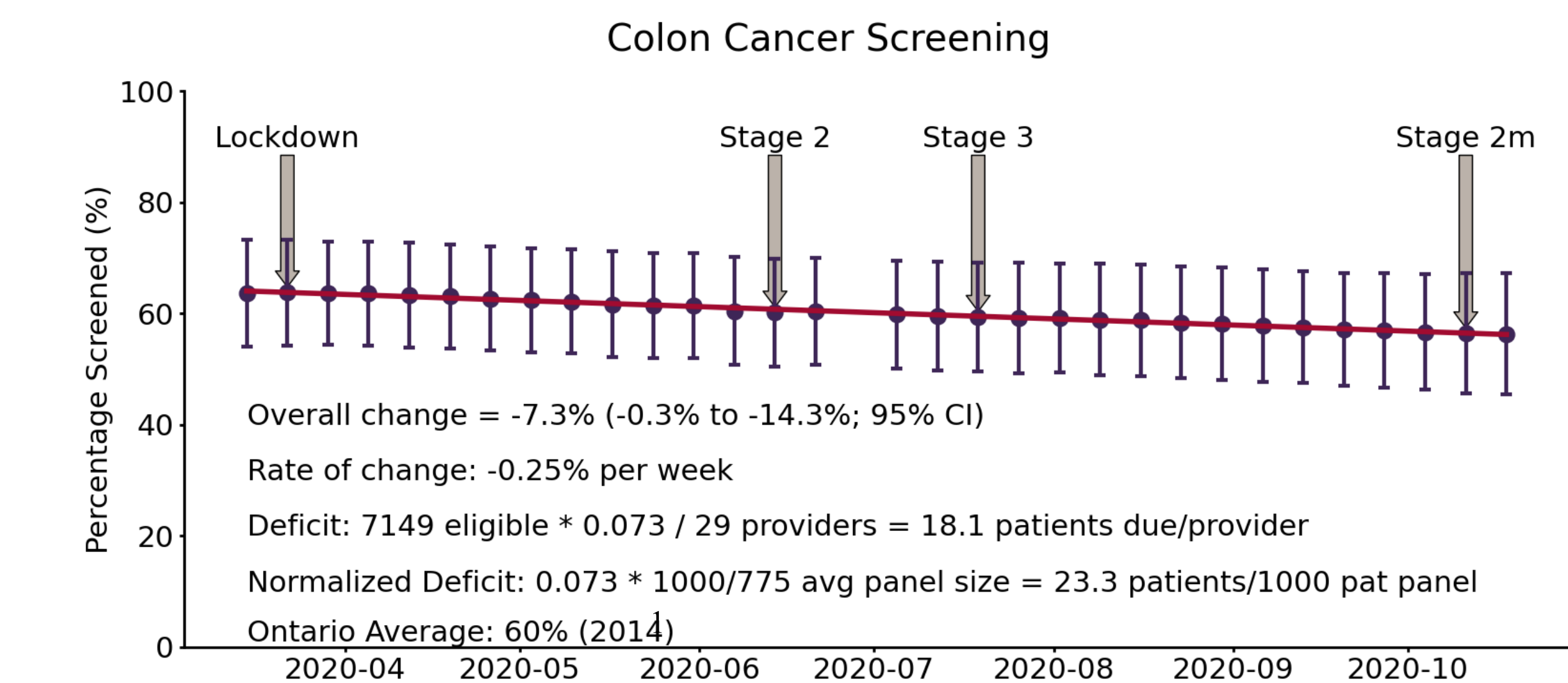


Figure 2. Colon cancer screening showing the percentage of eligible patients with either a FIT/FOBT in the last 2 years or colonoscopy in the last 10 years. Shows the mean percentage screened per provider +/- SD.

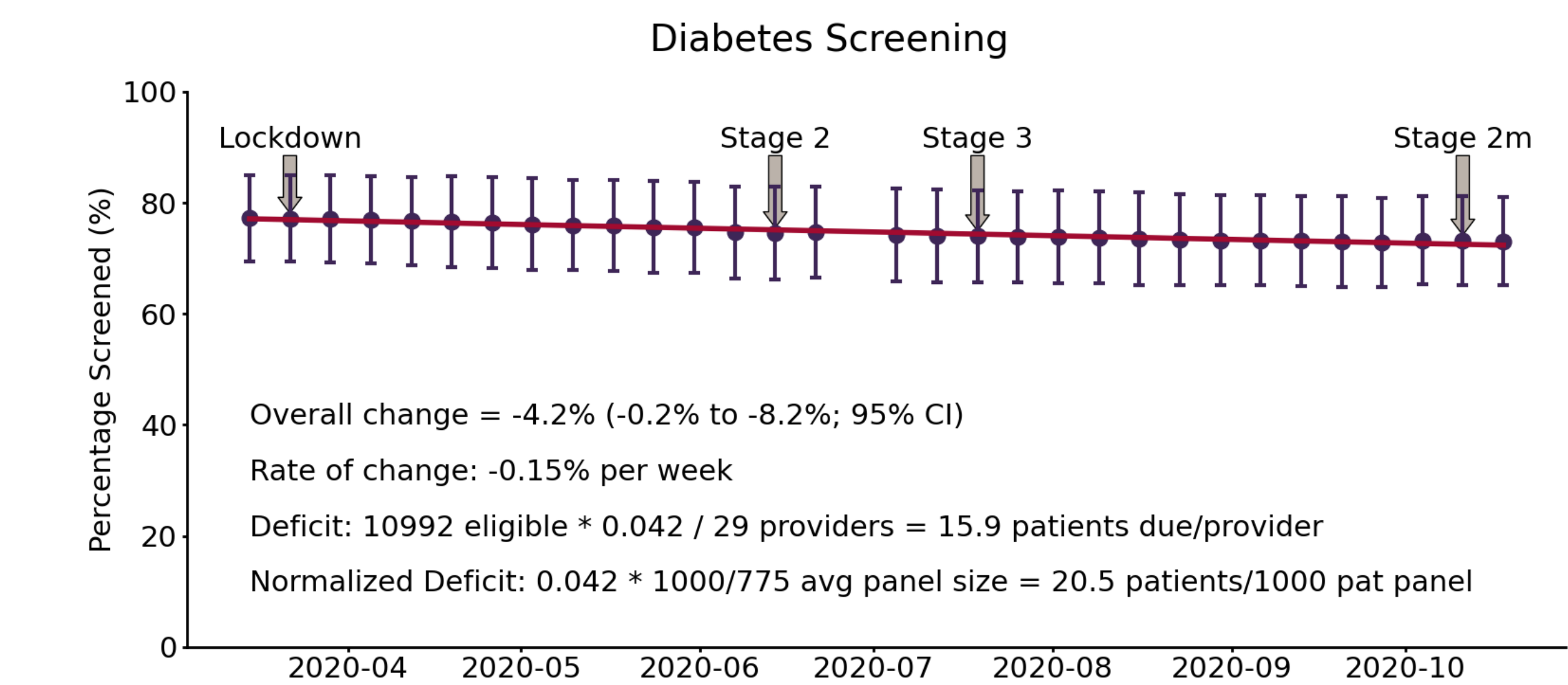


Figure 3. Diabetes screening showing the percentage of eligible patients with an HbA1c or Fasting Blood Glucose in the last 3 years. Shows the mean percentage screened per provider +/- SD.

References

- Cancer Care Ontario. Ontario Cancer Screening Performance Report 2016.
- Wang J, Vahid S, Eberg M, Milroy S, Milkovich J, Wright FC, et al. Clearing the surgical backlog caused by COVID-19 in Ontario: a time series modelling study. Can Med Assoc J. 2020 Sep 1;cmaj.201521.
- Canadian Task Force on Preventive Health Care [Internet]. [cited 2020 Jan 22]. Available from: <https://canadiantaskforce.ca/>

Discussion

- Preventive care requiring **in-person visits** (Pap testing) has shown the greatest drop in screening rates.
- Preventive care requiring **full system functionality** (FIT testing) has also shown a drop in screening rates.
- Preventive care that can be delivered via **virtual care** (diabetes screening) has shown a drop in screening.
- Stages 2 and 3 of reopening have not reversed these trends.
- A 1000 patient panel may have to do 22.7 cervical cancer, 23.3 colon cancer, and 20.5 diabetes screening test to restore pre-COVID screening rates

Conclusions

- COVID-19 is preventing patients from receiving preventive care
- A systematic approach is needed to address the preventive care deficits
- EMR data can be used to quantify these deficits